



## Industry News from our Lab Experts

It was nice to see many of you in the Windy City at the 2022 International Manufacturing Technology Show (IMTS). It was a pleasure to reconnect with friends, colleagues and customers from the manufacturing community and explore the latest innovations.

I'm also proud to announce we are a member of the NCSL International trade organization.

In continuation of our goal to help you, in this quarter's newsletter, we're sharing insight about the latest lab equipment and the intricacies of metrology to ensure the safety and quality of manufactured products.

- Why you need [expert lab services](#) for failure analysis, materials characterization, and much more.
- A new blog post will explore how and where to apply [datums to a blueprint](#).
- What is calibration by one of our lab leaders, [Nadia Ibrahimj](#).
- Technology is evolving, and we are too. Let us know how we can support your testing project.

Sincerely,

**Nicholas Szkotak**  
General Manager, Lab



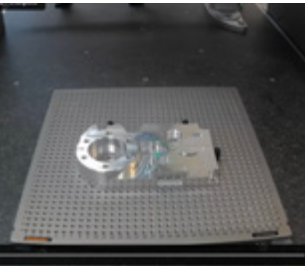
### Expert Lab Testing: Why It's Important

When using metal to manufacture a product, it's important to understand how two different metals will react when put together, how strong, or weak, the material is, and how it will hold up, or break down, in certain environments. It is also critical to distinguish sound (usable) materials from metal that has flaws and cannot be used in the manufacturing process. [Read how IIA can provide complete metals testing and reporting](#), so you know the exact characteristics of your material and what it can withstand.



### Failure Mode & Effects Analysis for Medical Devices

Nowhere is material integrity more important than in the medical device industry — particularly implantable medical devices. On those rare occasions when something goes wrong, a myriad of testing may be needed to determine the exact cause of the failure, whether it relates to materials, chemistry or sensitivity. [Learn how Failure Mode & Effects Analysis](#) ensures the defect and failure are corrected and the product is 100% safe before it re-enters the market, and how IIA can help.

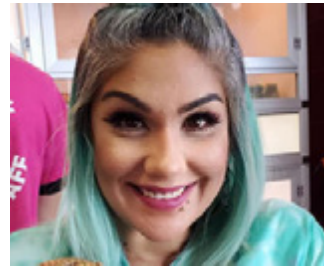


## Put Our New Equipment to the Test

3D scanning is a fast, flexible, and highly accurate way to confirm the accuracy of your manufacturing process. From the face of a penny to the contours of a fighter jet, IIA can scan virtually any object. And

now we can capture more data, faster, with our new CMM laser scanner. [Watch the Hexagon HP-L 10.10 in action.](#)

Our toolkit also includes a new, large-capacity 3D multisensory measurement system that enhances our capabilities and efficiency. The SmartScope® Flash™ 500 features measurement stability, metrological integrity, precision optics, superb illumination for the best video measurements, and multisensor versatility. Learn more about IIA's dimensional inspections.



## The Measure of Her Success

What is calibration? This is what Nadia Ibrahim wondered to herself the first time she walked into her new position as a Shipping &

Receiving Clerk in IIA's Lab Services Division. Her thirst for learning eventually helped her master the role of Calibration Technician, and earn 5 promotions in 10 years. Today, as Site Leader, Nadia juggles tasks ranging from scheduling to financial reconciliations, but helping her team members excel is what she loves most. [Get to know Nadia.](#)



## IIA Joins NCSL International

IIA is now a proud member of NCSL International, a professional trade organization for the world's measurement science experts and practitioners. From networking with our colleagues to advancing the field of measurement science, we look forward to being part of this premier organization.

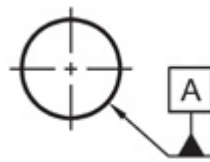
## What Our Customers Are Saying

*"Great turnaround on my projects, and neat software to share 3D scan comparisons."*

- A Leading Infrastructure Company

## IIA Participates in Manufacturing Day

Industrial Inspection & Analysis (IIA) and several other companies recently participated in Manufacturing Day, sponsored by the New Mexico Manufacturing Extension Partnership. We shared presentations and facility tours to 45 students plus teachers from the Technology Leadership High School located in the Sandia Science & Technology Park. The annual event introduces students to careers in manufacturing, and highlight local companies and the people working in the manufacturing industry.



## How to Apply Datums to a Blueprint

One of the most critical aspects of a blueprint, datums will either aid in producing a functional part that fits to its assembly perfectly, or a useless hunk of metal. As a general rule, datums should be used to identify critical features on a part blueprint for later use in determining if the part performs as intended. [Read a blog post](#) from one of our CMM experts to learn where and how to apply datums to a blueprint and three questions to ask when defining your datum.

## Let's Connect

We want to hear from you! Let us know about your latest testing challenges and how we can help. Call us at **(866) 514-4937** or complete our [online form](#) and we'll get back to you within 24 hours.

Be sure to follow us on [LinkedIn](#) to learn about the latest tools and techniques we're using to solve our clients' problems and make the world safer.

