



IIA NUCLEAR SERVICES

YOUR CHALLENGE. OUR EXPERTISE.

Industrial Inspection & Analysis (IIA) Nuclear Services offers full service industrial support to ensure safe, efficient, and compliant facilities. IIA offers exams, maintenance, foreign object retrieval, asset and integrity management, and Section XI (and Non-Section XI) examinations. We use automated and manual systems as well as conventional and Specialty NDE technologies, such as Pulsed Eddy Current (PEC) and Guided Wave Testing (GWT). We also use our own proprietary technology to deliver fast, safe, and reliable results for your facility.

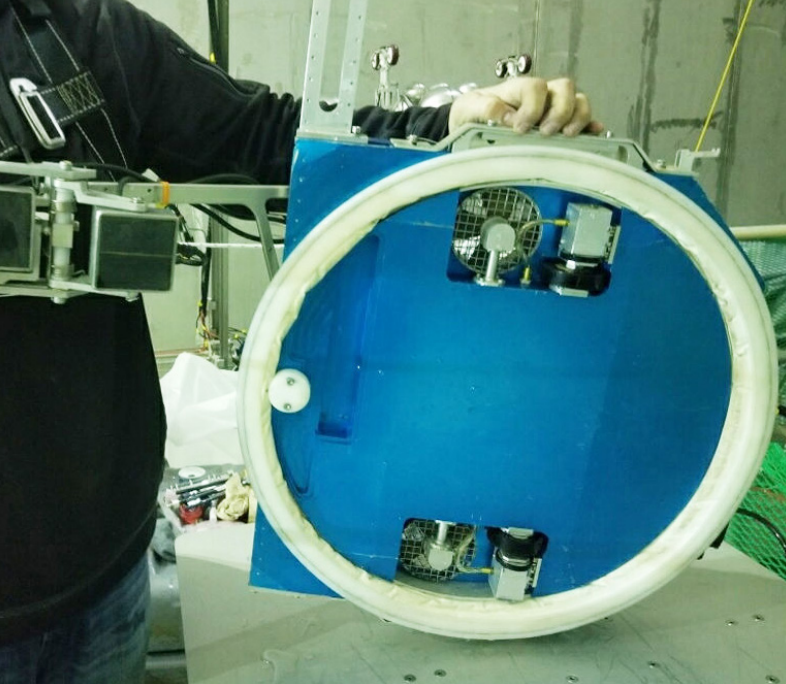
THE SERVICE YOU DESERVE

IIA has been the trusted industry leader for decades because we understand your challenges. IIA's asset inspections keep your facilities safe and running smoothly. We test critical components and critical welds; provide exams for Reactor Pressure Vessels (RPVs), dissimilar welds, and a variety of valve configurations; and we also offer emergency services. Our team includes highly qualified professionals from ASNT Level II and III Technicians to Certified Weld Inspectors and more. We offer expert and story-worthy service for each and every project.



“ Nuclear power plants are unique and require adhering to special safety rules and processes. I believe IIA's nuclear site experience was a critical factor in the project's success. ”

- Key leader from Nuclear Division of Fortune 100 energy company



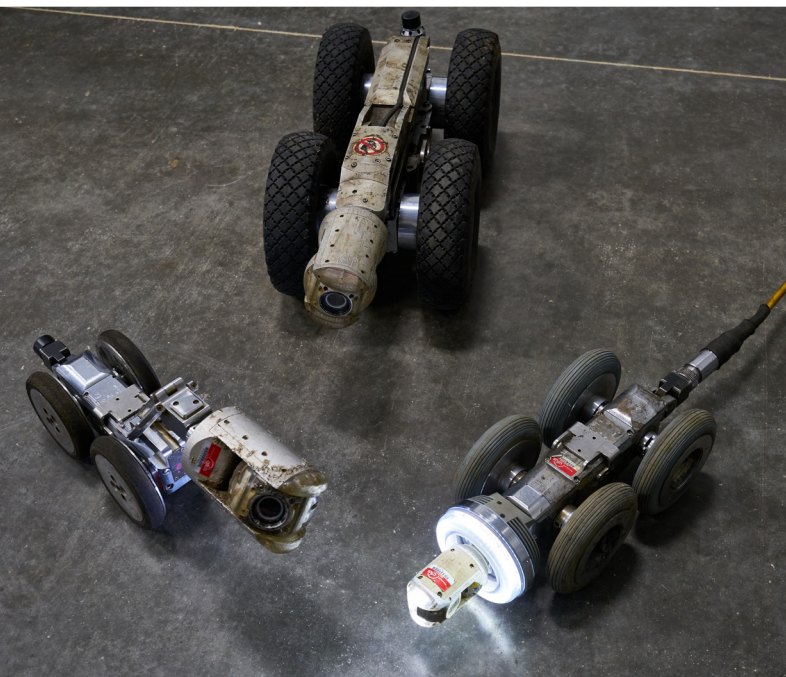
PROPRIETARY TECHNOLOGY

IIA has innovative technology that provides reliable results and enables the safe operation of your plant. The AIRIS® robotic scanner easily moves around internal components, and our Steam Generator Nozzle Examination Tool (SG-NExT) provides internal surface inspections. IIA's ARMUT® uses QR code film on complex geometry to examine critical welds, and the Automated Nozzle Tool System (ANT2) performs nozzle exams without obstructing the center of the reactor.



BREADTH OF SERVICE

Keeping your facility safe and compliant by providing corrosion, pitting, and wall-loss detection; In-Service Inspections; PDI; and general weld inspections, including unmatched elbow weld inspections. We provide exams for ID and OD piping, screening and monitoring of casings. We also examine Condensate Storage Tanks (CSTs) and Refueling Water Storage Tanks (RWSTs) and perform Service Water Line Inspections as well as In-Line validation (ILI).

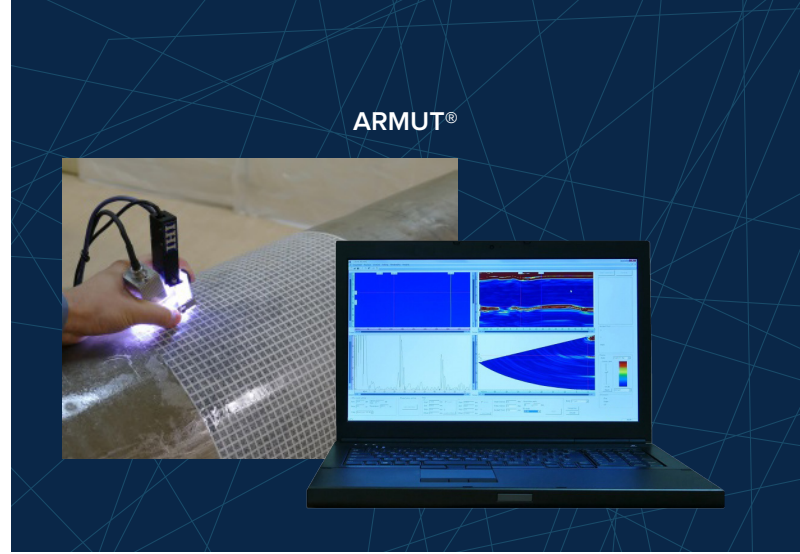


FOREIGN OBJECTS

We use Remote Visual Inspection techniques and technology to provide foreign object search and retrieval solutions for most parts of your plant. Foreign objects can cause shut-downs and loss of revenue, and can lead to catastrophic failures. IIA uses intrinsically safe remote visual cameras and crawlers. We are the industry leaders in mobilizing and safely deploying Explosion Proof inspection equipment.

TECHNOLOGIES

We use a combination of Conventional, Specialty, and Proprietary technologies, including PASS, AIRIS, ANT2, and ARMUT®. IIA's proprietary ARMUT® technology uses QR code film on complex geometry and is used to examine critical welds and gather extremely high-resolution images. Our Automated Nozzle Tool System (ANT2) is used to perform nozzle exams without obstructing the center of the reactor and exams can be completed with or without the Core Barrel in place.



SPECIALTY NDE

- Absolute Recordable Manual Ultrasonic Testing (ARMUT®)
- Automated Nozzle Tool System (ANT2)
- Guided Wave Testing (GWT)
- Phased Array Sectorial Scanning (PASS)
- Pulsed Eddy Current Array (PECA)
- Automated Corrosion Mapping (Internal)
- Laser Profilometry (External)
- Flex Form Phased Array
- Computed Radiography
- Phased Array Ultrasonic Testing (PAUT) Manual & Automated
- Full Matrix Capture (FMC)
- Time of Flight Diffraction (TOFD)
- Shear Wave

TRADITIONAL NDE

- Eddy Current
- Radiography (RT/CR/X-Ray)
- Magnetic Particle (MT)
- Penetrant Testing (PT)
- Ultrasonic Thickness Testing (UTT)
- Visual Testing (VT)
- Corrosion Mapping
- Ferrite Testing
- Hardness Testing

RVI

Internal Visual Inspections of anything from ¼" and above in tanks, tubes, vessels or pipes, including:

- Cracks, Holes or Joint Separation
- Collapsed Pipes
- Blockage or Debris Build Up
- Foreign Object Removal/Retrieval
- General Assessment - Cleanliness, Corrosion, Water
- Feedwater Line Inspections
- Cold and Hot Reheat Line Inspections with Magnetic Crawlers

CERTIFICATIONS AND GUIDELINES

- All Certifications Based on Guidelines in SNT-TC-1A and CP189
- NUPIC and NIAC Approved Vendor
- In-Line Inspection Validation 10CFR50, Appendix B, Part 21 ANSI Standard N45.2

Do You Need To Talk To An Expert?

Let us provide your company with all of your plant needs for the future.

Contact us at **979-401-0277** or visit us at **industrial-ia.com**